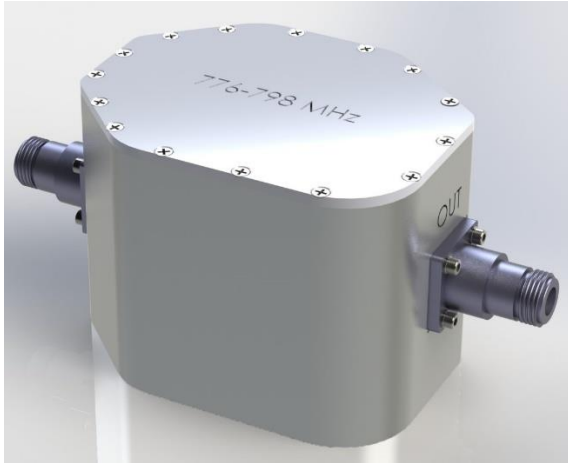


# Product Specifications



## CCRF-252

Filter, 776 - 798 MHz

### Electrical Specifications

---

PASSBAND	776-798 MHz
PASSBAND INSERTION LOSS	3.0 dB Max.
PASSBAND RETURN LOSS	20 dB Min.
STOPBAND REJECTION	30 dB Min $\leq$ 774 MHz 30 dB Min. $\geq$ 800 MHz
POWER HANDLING	1 W CW / Avg. Per Port 10 W Peak

### Environmental Specifications

---

OPERATING TEMPERATURE	0° to +60°C Operating
ENVIRONMENTAL	Per ETS-300
WEATHERIZATION	Per IP-65

### Mechanical Specifications

---

CONNECTORS	Type 'N' Female
SIZE	3.225 x 3.46 x 4.4" Excluding connectors.
WEIGHT	Approx. 3 lbs

Rev: 041218