

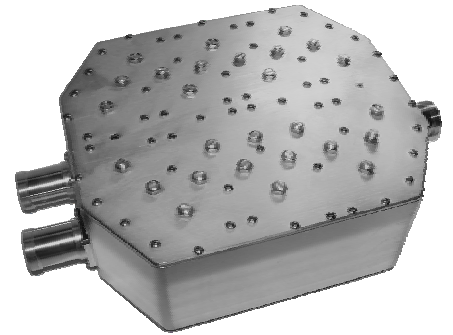


WIRELESS PRODUCTS

850 Band Duplexer

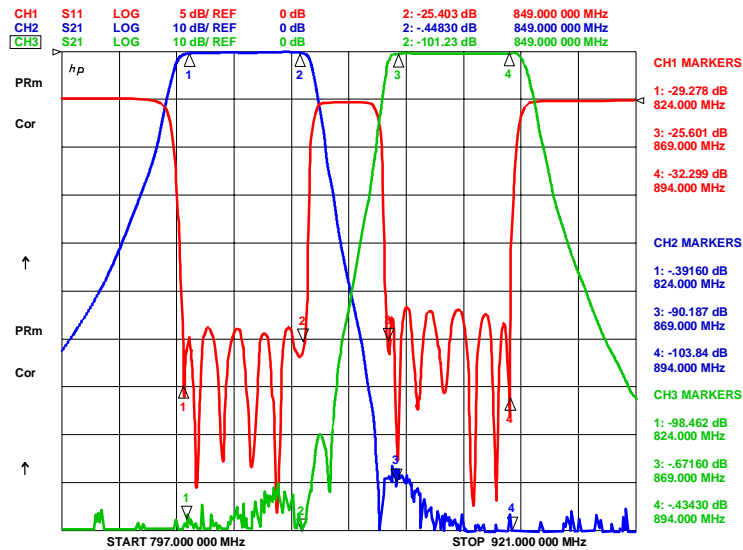
ClearComm Technologies' model number **CCDP-327-1** is a highly selective, 850 Band Duplexer. It offers low insertion loss combined with specific, out of band rejection. The filter is designed to pass the full receive and transmit bands with insertion losses of 0.75 dB maximum. Isolation between receive and transmits bands is greater than 80 dB. The unit has been specifically designed for high power base station applications. Power handling is 800 Watts average or CW and 16 kW peak. The approximate size of the unit is 9.2" x 8.0" x 3.6". 7/16 DIN female connectors are provided on the unit. Mounting options include rack mountable, ladder suspension as well as customized mechanical configurations. An outdoor, weather-sealed option is available also. For requirements specific to your needs, please contact ClearComm Technologies, LLC.

PARAMETER	SPECIFICATION
PASSBAND	
RECEIVE	824 – 849 MHz
TRANSMIT	869 – 894 MHz
PASSBAND INSERTION LOSS	0.75 dB Max.
INSERTION LOSS VARIATION	0.4 dB Max.
PASSBAND RETURN LOSS	20 dB Min
ISOLATION	
TRANSMIT TO RECEIVE	80 dB Min.
RECEIVE TO TRANSMIT	80 dB Min.
PASSIVE INTERMODS (with two +44 dBm tones)	-120 dBm (as measured in Rx band)
POWER HANDLING	800 W Avg. / CW 16 kW Peak
OPERATING TEMPERATURE ¹	0° to +60° C
CONNECTORS	7/16 DIN Female
DIMENSIONS	9.2" x 8.0" x 3.6" (See Outline)
AVAILABLE OPTIONS	<ul style="list-style-type: none"> • Mounting, Tower, Cable Tray, Ladder or Rack Mount Options Available • Outdoor – Weather-sealed



Notes:
1 – Extended temperature range of -40° to +85° C with slightly degraded electrical performance

TYPICAL PERFORMANCE DATA



OUTLINE DIMENSIONS

